



# **Centers of Excellence for Labor Market Research**

---

**Introduction**  
**COE & Program Recommendation Process**





C·O·E

CENTERS OF EXCELLENCE  
FOR LABOR MARKET RESEARCH

The COE provide **quality labor market data and information** to help colleges with:



Assessing labor  
market needs



Reviewing career  
education programs



Investing in new career  
education programs



Grant program planning  
and investment

**We aspire to be the leading source of workforce information  
and insight for California's community colleges.**

# The COE Network





# **Centers of Excellence for Labor Market Research**

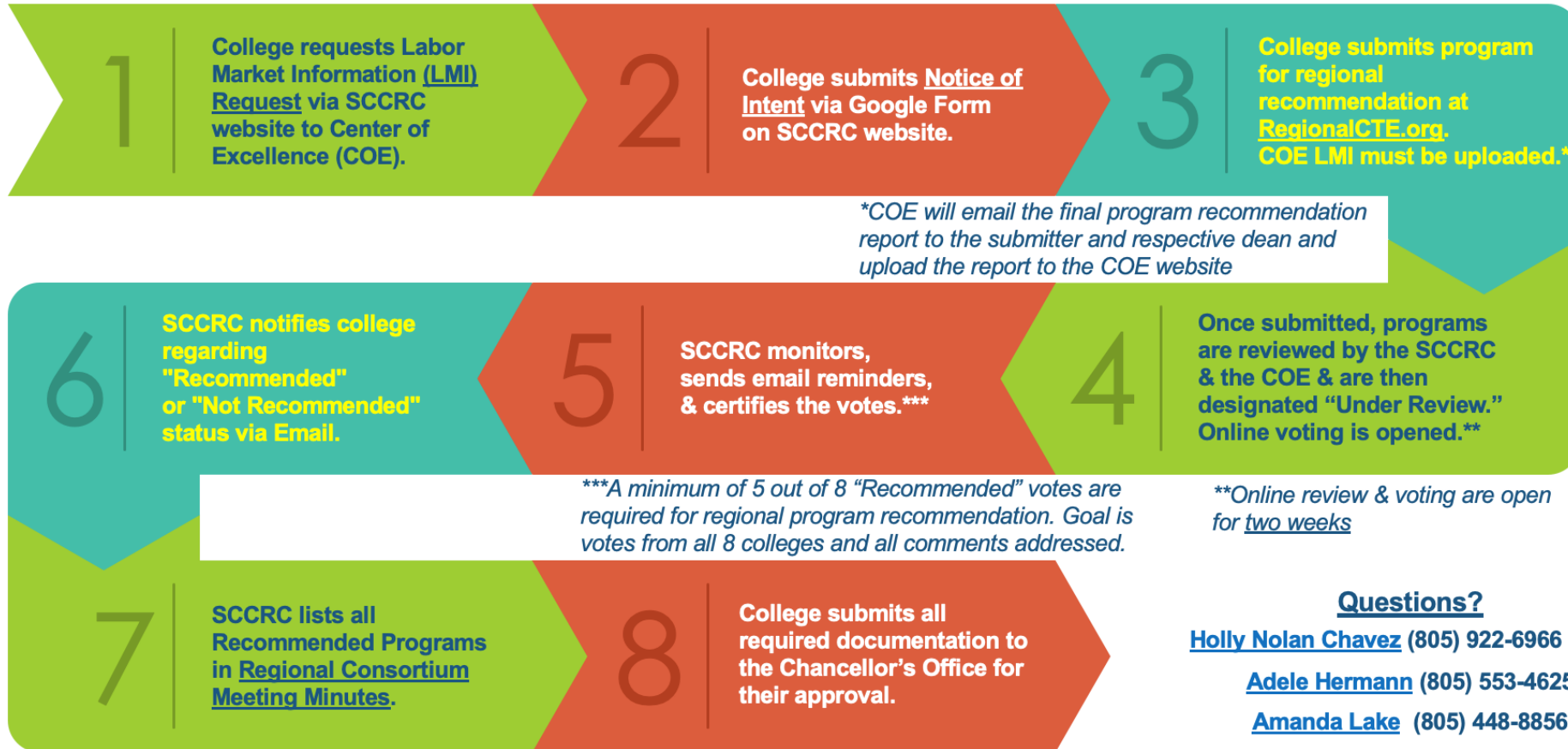
---

## **Program Recommendation Reports**



## South Central Coast Regional Consortium Program Recommendation Process

Link to Program Recommendations Submission Process on SCCRC website [HERE](#)



### Questions?

[Holly Nolan Chavez](#) (805) 922-6966 x5276

[Adele Hermann](#) (805) 553-4625

[Amanda Lake](#) (805) 448-8856



# LMI Request Process

## [LMI Data Request Form](#)

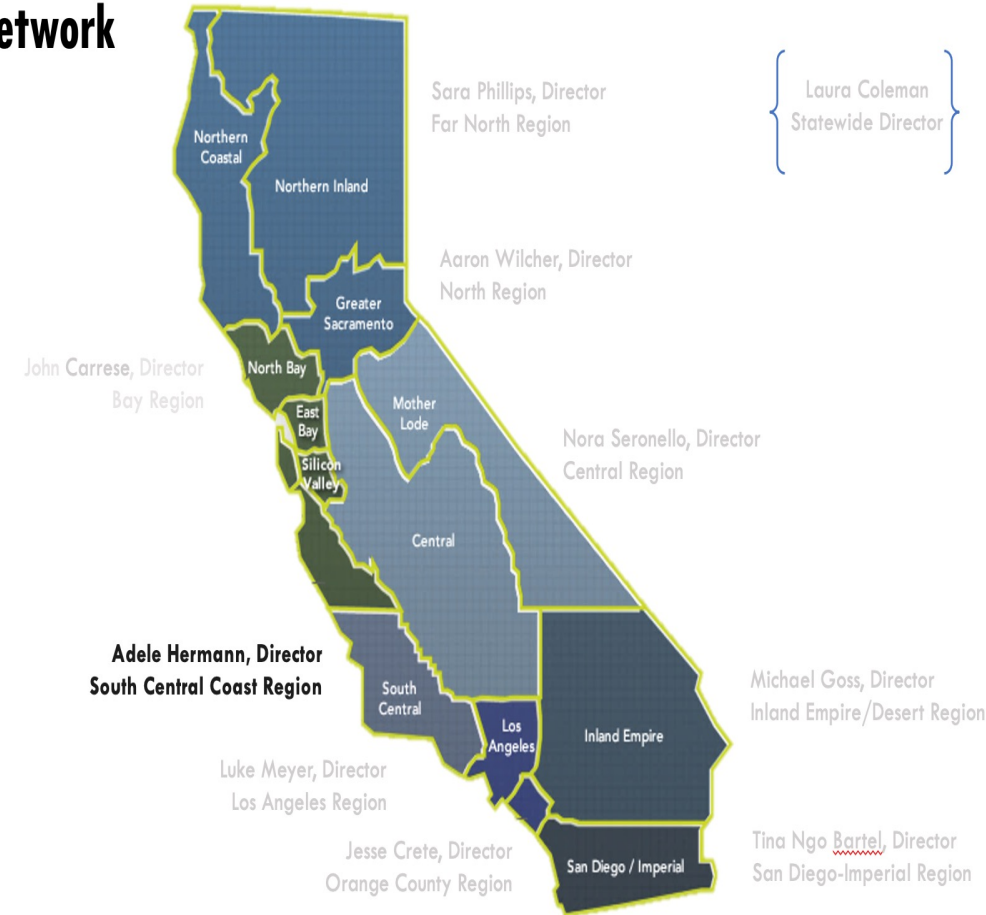
The PCAH 7th Edition (page 93) states: “Pursuant to Education Code § 78015 Labor Market Information (LMI) data is specifically required for all new CTE program proposals, where available. Current LMI and analysis, or other comparable information, must show that jobs are available for program completers within the local service area of the individual college and/or that job enhancement or promotion justifies the proposed curriculum. Regional, statewide, or national labor market evidence may be included as supplementary support, but evidence of need in the specific college service area or region is also necessary.”

**The Chancellor’s Office and the SCCRC rely on consistent LMI data provided by the region’s Center of Excellence (COE) in order to make a recommendation for program approval. A Program Recommendation Report that is NO MORE THAN TWO YEARS OLD is required from the Center of Excellence. This report needs to be uploaded to the Program Submission page on the [RegionalCTE](#) website. At their discretion, colleges may submit other LMI data in addition to the LMI provided by the COE.**

• See sample program recommendation and LMI reports at the [Center of Excellence](#) website

• To contact Center of Excellence Director, Adele Hermann, call (805) 553-4625 or email [ahermann@vcccd.edu](mailto:ahermann@vcccd.edu)

## The COE Network



# LMI Request Process

---



C · O · E

CENTERS OF EXCELLENCE  
FOR LABOR MARKET RESEARCH

Labor market data is being requested to inform ...

- ☐ College/District program review
- ☐ Existing low unit, local certificate(s) for state chaptering
- ☐ Exploratory purposes
- ☐ Noncredit vocational program development
- ☐ Program modification (substantial change)
- ☐ Regional program recommendation

# LMI Request Process

---



C·O·E

CENTERS OF EXCELLENCE  
FOR LABOR MARKET RESEARCH

What type of certificate(s) and/or degree(s) are in development or undergoing review? Select all that apply.

Associate Degree

Certificate

Other

☐ Baccalaureate of Science (B.S.) degree

☐ Other not listed (please describe)

☐ I don't know



# LMI Request Process

---

## Taxonomy of Program (TOP) Codes

Specific to the California Community Colleges, TOP is a system of numerical codes used to collect and report information on programs and courses that have similar outcomes. Knowing the TOP code(s) helps us identify similar programs in your region and include that information in the labor market report. Access the [TOP Code manual](#) for more information (link opens in a new window).

Is there a TOP code associated with this request?

☒ Yes

☐ No

Using the field below, please select the TOP code assigned or under consideration. To find the TOP title or 6-digit TOP code, type directly into the field and the list will narrow to matching titles or codes.

12

1201.00 Health Occupations, General  
1202.00 Hospital and Health Care Administration  
1205.00 Medical Laboratory Technology  
1205.10 Phlebotomy  
1206.00 Physicians Assistant

# LMI Request Process

---

## Which occupations does this program prepare students for?

Using the fields below, please identify at least one occupation that best matches the program of study.

- **Match to SOC:** To select the Standard Occupational Classification (SOC) occupation title or code, type directly into the field and the list will populate with the top matches. Select the best match and it will be saved in your response.\*
- **No Match Found:** If you do not find a suitable match in the SOC list, type the job title as you know it directly into the field. The job title you enter will be saved in your response.

\*At least one SOC or job title must be identified for the request. For more information, browse job titles and codes at [O\\*NET](#) (link opens in new window). SOC codes are 6-digits long, e.g., Conservation Scientists (19-1031); O\*NET codes are extensions of SOC codes, e.g., Range Managers (19-1031.02) and are not included in the search lists below.

Occupation #1

Occupation #2



# **Centers of Excellence for Labor Market Research**

---

## **Report Features**

# Example Occupations

## Occupation, Description, and Sample Job Titles

SOC Code	Title	Description	Sample of Reported Job Titles
29-1071	<b>Physician Assistants</b>	Provide healthcare services typically performed by a physician, under the supervision of a physician. Conduct complete physicals, provide treatment, and counsel patients. May, in some cases, prescribe medication. Must graduate from an accredited educational program for physician assistants.	Cardiology Physician Assistant, Certified Physician Assistant (PA-C), Emergency Medicine Physician Assistant (Emergency Medicine PA), Family Practice Physician Assistant, Orthopaedic Physician Assistant, Orthopedic Physician Assistant, Physician Assistant (PA), Physician's Assistant, Surgical Critical Care Physician Assistant (Surgical Critical Care PA), Surgical Physician Assistant (Surgical PA)
31-9092	<b>Medical Assistants</b>	Perform administrative and certain clinical duties under the direction of a physician. Administrative duties may include scheduling appointments, maintaining medical records, billing, and coding information for insurance purposes. Clinical duties may include taking and recording vital signs and medical histories, preparing patients for examination, drawing blood, and administering medications as directed by physician.	Certified Medical Assistant (CMA), Chiropractor Assistant, Clinical Medical Assistant, Doctor's Assistant, Health Assistant, Ophthalmic Assistant, Ophthalmological Assistant, Optometric Assistant, Outpatient Surgery Assistant, Registered Medical Assistant (RMA)

# Example Demand Data

## Five-Year Projections for Medical Assisting in the South Central Coast Region

SOC	Occupation	2021 Jobs	2026 Jobs	2021-2026 Change	2021-2026 % Change
29-1071	Physician Assistants	1,112	1,292	180	16%
31-9092	Medical Assistants	4,910	5,257	347	7%

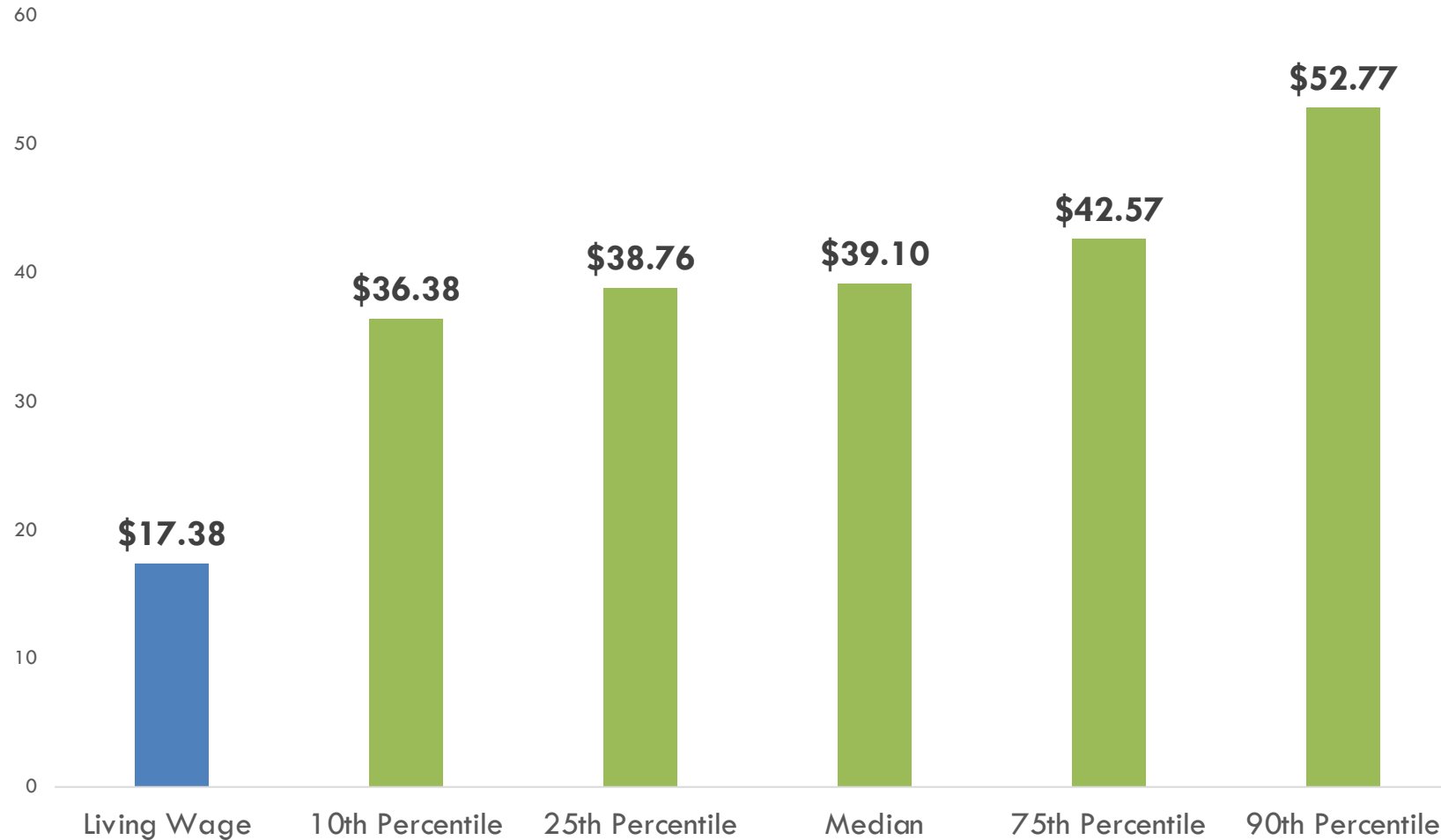
## Earnings for Medical Assisting in the South Central Coast Region

SOC	Occupation	Entry-Level Hourly Earnings	Median Hourly Earnings	Experienced Hourly Earnings
29-1071	Physician Assistants	\$59.88	\$59.88	\$62.42
31-9092	Medical Assistants	\$17.65	\$18.32	\$22.71

Source: Economic Modeling Specialists International (EMSI)

# Example Wage Data

## Earnings for Medical Assisting in the South Central Coast Region



Source: Family Needs Calculator (Living wage is based on Single Adult household with no children); Economic Modeling Specialists International (EMSI)



# Example Job Titles Data

## Top Job Titles

Title	Job Postings, Full Year 2021
Medical Assistant	694
Physician's Assistant	65
Medical Assistant II	49
Certified Medical Assistant	34
Medical Assistant Back Office	26

Source: Labor Insight/Jobs (Burning Glass)

# Example Employers Data

## Top Employers

Employer	Job Postings, Full Year 2021
Dignity Health	123
Community Memorial Health System	81
Community Health Centers of the Central Coast	48
Concentra	37
University of California	34

Source: Labor Insight/Jobs (Burning Glass)

# Example Skills in Demand

## Specialized Skills

Skills	Job Postings, Full Year 2021
Patient Care	700
Scheduling	652
Vital Signs Measurement	633
Injections	476
Appointment Setting	473
Cardiopulmonary Resuscitation (CPR)	456
Medical Assistance	406
Electrocardiogram (EKG/ECG)	390
Customer Service	309
Phlebotomy	262
Electronic Medical Records	262
Front Office	249
Patient Preparation	245
Electronic Health Records	243
Laboratory Testing	241

## Baseline Skills

Skills	Job Postings, Full Year 2021
Communication Skills	650
Bilingual	498
Spanish	479
English	406
Computer Literacy	392
Organizational Skills	371
Telephone Skills	347
Teamwork/Collaboration	292
Multi-Tasking	292
Detail-Oriented	272

## Software and Programming Skills

Skills	Job Postings, Full Year 2021
Microsoft Office	239
Word Processing	110
Microsoft Excel	108
Microsoft Word	81
ICD-10	47
ICD-9-CM Coding	23
Microsoft Outlook	19
Microsoft Access	16
Practice Management Software	14
Microsoft Windows	13

Source: Labor Insight/Jobs (Burning Glass)

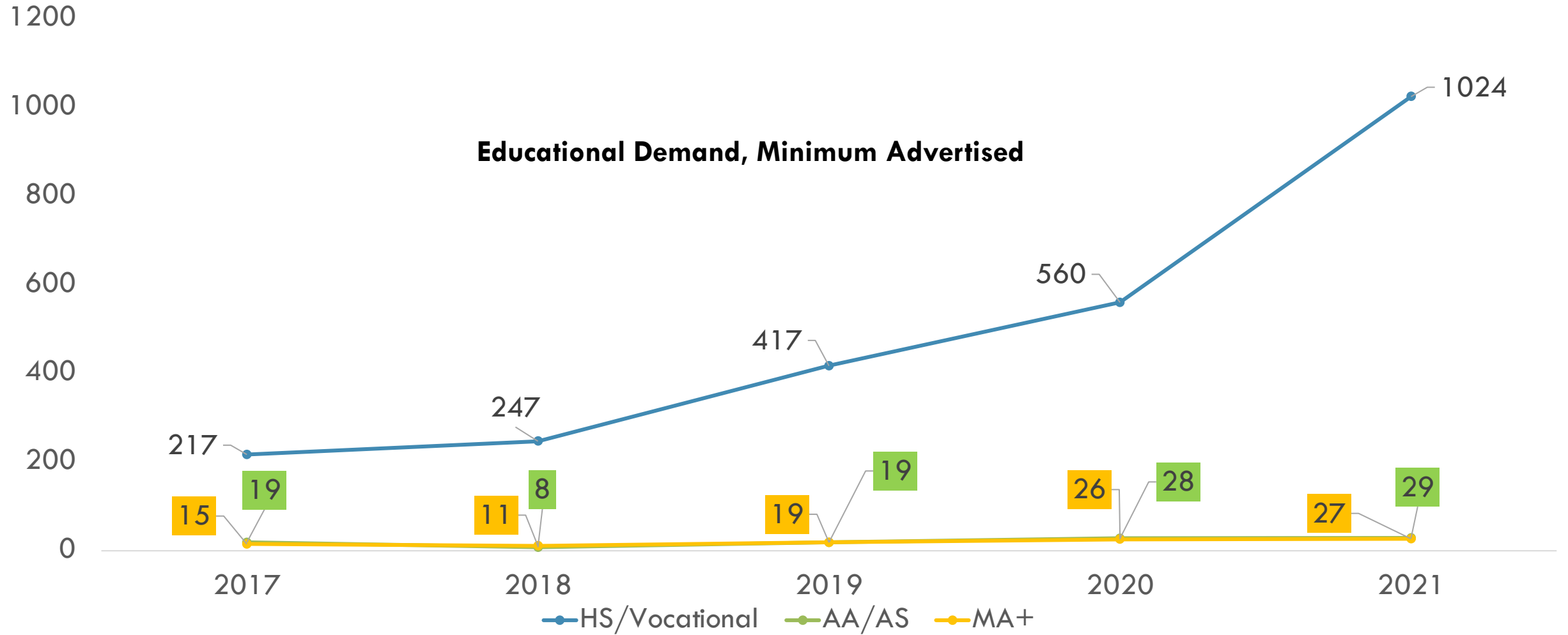
# Example Industry Data

## Industries Employing the Most in the Medical Assisting Field, 2021

Industry	Occupation Group Jobs in Industry	% of Occupation Group in Industry
Health Care and Social Assistance	1,409	83%
Professional, Scientific, and Technical Services	76	5%
Educational Services	59	4%
Finance and Insurance	55	3%
Manufacturing	41	2%

Source: Labor Insight/Jobs (Burning Glass)

# Example Educational Demand Data



# Example Education/Training Data

## Education and Training Requirements

SOC	Occupation	Typical entry-level education	Typical on-the-job training
29-1071	Physician Assistants	Master's degree	None
31-9092	Medical Assistants	Postsecondary Nondegree Award	None

Source: Labor Insight/Jobs (Burning Glass)



# Example Certifications in Demand

## Certifications

Certifications	Job Postings, Full Year 2021
Certified Medical Assisting	796
Basic Life Saving (BLS)	449
Basic Cardiac Life Support Certification	294
First Aid CPR AED	266
Registered Medical Assistant	163

Source: Labor Insight/Jobs (Burning Glass)

# Example Supply Data

## Completions and Openings

<b>6</b> Regional Institutions had Related Programs (2020)	<b>89</b> Regional Completions (2020)	<b>241</b> Annual Openings (2020)
---------------------------------------------------------------	------------------------------------------	--------------------------------------

CIP Code	Program	Completions (2020)
48.0508	Welding Technology/Welder	89

Source: Economic Modeling Specialists International (EMSI)

# Example Awards Data

## CCC and Non-CCC Awards the South Central Coast Region, 2020

CCC Programs		Completers
Cuesta College		49
Allan Hancock College		14
College of the Canyons		13
Antelope Valley College		10
Ventura College		3
Non-CCC Programs		Completers
Pacific Coast Trade School		0

Source: Economic Modeling Specialists International (EMSI)

# Example Student Outcomes Data and Narrative

## Student Outcomes


The CTE LaunchBoard provides student outcome data on the effectiveness of CTE programs. The following student outcome information was collected from regional exiters of the Medical Assisting Programs (TOP: 1 208.00) in the South Central Coast region for the 2018-19 academic year.

- Completers of Medical Assisting programs from the 2018-2019 academic year in the South Central Coast region had a **median annual wage upon completion of \$27,354.**
- 60% of students are **employed within a year** after completing a program.
- 27% of students **attained a living wage** within a year of completion.
- Completers experienced an average of +29% **change in earnings after exiting.**
- 72% of students were **part-time**, 7% **skill builders**, 53% **first-generation**, and 88% **economically disadvantaged.**

# Example Key Findings

- In the South Central Coast region, **the number of jobs related to Medical Assisting are expected to increase** for Physician Assistants and Medical Assistants.
- Medical Assisting is anticipated to experience a **low risk of automation**.
- In 2020 there were 2,887 regional completions in programs related to the occupations identified as related to Medical Assisting and 1,148 openings, indicating an **oversupply**.
- Typical entry-level education is a **Postsecondary Nondegree Award** for Medical Assistants and a **Master's degree** for Physician Assistants.
- Completers of Medical Assisting programs from the 2018-2019 academic year in the South Central Coast region had a **median annual wage upon completion of \$27,354**.
- 60% of students are **employed within a year** after completing a program.
- 27% of students **attained a living wage** within a year of completion.
- Completers experienced an average of +29% **change in earnings after exiting**.
- 72% of students were **part-time**, 7% **skill builders**, 53% **first-generation**, and 88% **economically disadvantaged**.

# Example Cover Page



**Medical Assisting (TOP 1208.00)**

**July 2022**

**Prepared by the South Central Coast Center of Excellence for Labor Market Research**

---

**Program Recommendation**

This report was compiled by the South Central Coast<sup>1</sup> Center of Excellence to provide regional labor market data for the program recommendation – Medical Assisting. This report can help determine whether there is demand in the local labor market that is not being met by the supply from programs of study (CCC and non-CCC) that align with this occupation group.

**Key Findings**

- In the South Central Coast region, the number of jobs related to Medical Assisting are expected to **increase** for Medical Assistants.
- Medical Assisting is anticipated to experience a **medium risk of automation** for Medical Assistants.
- In 2020 there were 3,305 regional completions in programs related to the occupations identified as related to Medical Assisting and 645 openings, indicating an **oversupply**.
- Typical entry-level education is a **postsecondary nondegree award**.
- Completers of Medical Assisting programs from the 2018-2019 academic year in the South Central Coast region had a **median annual wage upon completion of \$27,380**.
- 68% of students are **employed within a year** after completing a program.
- 28% of students **attained a living wage** within a year of completion.
- Completers experienced an average of **+30%** change in earnings after exiting.
- 72% of students were **part-time**, 7% **skill builders**, 53% **first-generation**, and 88% **economically disadvantaged**.

Title and TOP Code

Introductory paragraph

Key Findings/Summary





# **Centers of Excellence for Labor Market Research**

---

**Occupations - O\*NET as a Resource**



## O\*NET OnLine features

### Introduction

### Occupation Keyword Search

Examples: 25-1011.00, dental assistant

[Search O\\*NET-SOC occupations](#) ➔

### Find Occupations

[Bright Outlook](#)

[Career Cluster](#)

[Hot Technology](#)

[Industry](#)

[Job Family](#)

[Job Zone](#)

## More career sites & resources



### "I want to be a..."

Start the career you've dreamed about, or find one you never imagined. Discover your interests with the [O\\*NET Interest Profiler](#) and find more exploration options at [My Next Move](#).

[Find your career at My Next Move](#) ➔



### ATTN: VETERANS

Put your military skills and experience to work in civilian life.

[Learn more at My Next Move for Veterans](#) ➔



### ¿Habla español?

# Occupation Keyword Search

Occupations matching "solar"

Search again: solar

Go

20 occupations shown

Show matches:

Closest

All

How do they match?

Code	Occupation	
47-2152.04	<a href="#">Solar Thermal Installers and Technicians</a>	
17-2199.11	<a href="#">Solar Energy Systems Engineers</a>	
41-4011.07	<a href="#">Solar Sales Representatives and Assessors</a>	
47-1011.03	<a href="#">Solar Energy Installation Managers</a>	
47-2031.00	<a href="#">Solar Photovoltaic Installers</a>	Bright Outlook
17-2071.00	<a href="#">Electricians</a>	
17-2199.03	<a href="#">Energy Engineers, Except Wind and Solar</a>	
41-4011.00	<a href="#">Sales Representatives, Wholesale and Manufacturing, Technical and Scientific Products</a>	
11-9021.00	<a href="#">Construction Managers</a>	
17-1022.00	<a href="#">Surveyors</a>	
17-3023.00	<a href="#">Electrical and Electronic Engineering Technologists and Technicians</a>	

# Solar Photovoltaic Installers

47-2231.00

 Bright Outlook

 Updated 2022

Assemble, install, or maintain solar photovoltaic (PV) systems on roofs or other structures in compliance with site assessment and schematics. May include measuring, cutting, assembling, and bolting structural framing and solar modules. May perform minor electrical work such as current checks.

**Sample of reported job titles:** Installer, Photovoltaic Installer (PV Installer), PV Design Technician (Photovoltaic Design Technician), Solar Designer, Solar Installer, Solar Installer Technician, Solar Photovoltaic Installer (Solar PV Installer), Solar Technician

Summary

Details

Custom

 Easy Read

 Veterans

 Español

 Contents ▾

## Occupation-Specific Information

### Tasks

▼ 5 of 26 displayed

- Install photovoltaic (PV) systems in accordance with codes and standards, using drawings, schematics, and instructions.
- Assemble solar modules, panels, or support structures, as specified.
- Apply weather sealing to array, building, or support mechanisms.
- Determine appropriate sizes, ratings, and locations for all system overcurrent devices, disconnect devices, grounding equipment, and surge suppression equipment.
- Install module array interconnect wiring, implementing measures to disable arrays during installation.

### Technology Skills



## Occupation-Specific Information

Overview

Tasks

Technology Skills

## Occupational Requirements

Work Activities

Detailed Work Activities

Work Context

## Experience Requirements

Job Zone

Training & Credentials

## Worker Requirements

Skills

Knowledge

Education

## Worker Characteristics

Abilities

Interests

Work Values

Work Styles

## Workforce Characteristics

Wages & Employment

Job Openings

## More Information

Related Occupations

Additional Information

Share Sites

Bright Outlook

Updated 2022

tures in compliance with site assessment and schematics. May include  
ay perform minor electrical work such as current checks.

gn Technician (Photovoltaic Design Technician), Solar Designer, Solar Installer,  
cian

ñol

# Occupation Keyword Search

Occupations matching “green”

Search again:

green

Go

20 occupations shown

Show matches:

Closest

All

How do they match?

Code ↕	Occupation ↕
17-2199.03	<a href="#">Energy Engineers, Except Wind and Solar</a>
13-1199.05	<a href="#">Sustainability Specialists</a> ☀️ <b>Bright Outlook</b>
13-2051.00	<a href="#">Financial and Investment Analysts</a> ☀️
17-1011.00	<a href="#">Architects, Except Landscape and Naval</a>
11-1011.03	<a href="#">Chief Sustainability Officers</a>
47-2152.00	<a href="#">Plumbers, Pipefitters, and Steamfitters</a>
51-9061.00	<a href="#">Inspectors, Testers, Sorters, Samplers, and Weighers</a>
17-2141.00	<a href="#">Mechanical Engineers</a>
13-1151.00	<a href="#">Training and Development Specialists</a> ☀️
17-2131.00	<a href="#">Materials Engineers</a>
19-2041.03	<a href="#">Industrial Ecologists</a>
25-1194.00	<a href="#">Career/Technical Education Teachers, Postsecondary</a>





Occupation keyword search



electrician

Go

## O\*NET OnLine features

Introduction

Occupation Keyword Search



dental assistant

Examples: 25-1011.00, dental assistant

Find Occupations

Bright Outlook  
Career Cluster  
Hot Technology  
Industry  
Job Family  
Job Zone

## More career sites & resources



"I want to be a..."

Start the career you've dreamed about, or find one you never imagined. Discover your interests with the [O\\*NET Interest Profiler](#) and find more exploration options at [My Next Move](#).

Find your career at My Next Move



ATTN: VETERANS

Put your military skills and experience to work in civilian life.

Army (MOS)

15W

Go



¿Habla español?

## 1. Occupation Keyword Search

- a. Program Specific
- b. Exploratory
- c. Theme

## 2. Find Occupations

# SHARE OUT

A decorative graphic on the left side of the slide. It features a cluster of overlapping circles in various colors (blue, red, yellow, green, purple, grey) of different sizes. Inside these circles are various white icons representing business and technology: bar charts, line graphs, a pie chart, a person silhouette, a checkmark, and a target. The circles are arranged in a way that suggests a network or a flow of information.

## COE Resources

---

[www.coeccc.net](http://www.coeccc.net)

## The leading source of labor market research for the California Community Colleges

Our work empowers community colleges to make informed decisions for preparing the workforce of tomorrow

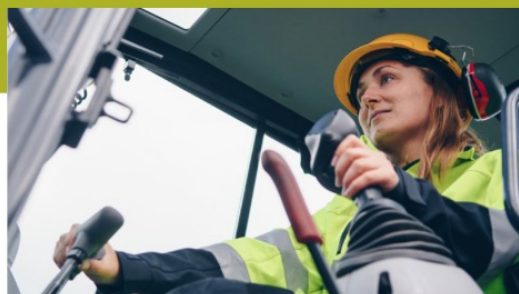




## South Central Coast

The South Central Coast region is home to eight community colleges serving San Luis Obispo, Santa Barbara, Ventura and northern Los Angeles counties.

### RECENT NEWS



#### SOUTH CENTRAL COAST COE CO-HOSTS WORKFORCE NEEDS IN THE CONSTRUCTION SECTOR WEBINAR

South Central Coast COE Director, Dr. Adele Hermann, along with fellow COE Directors, shared findings from the Construction Sector Workforce Study on October 28<sup>th</sup>.

[READ NEWS](#)

# Hello

#### MEET THE SOUTH CENTRAL COAST COE'S NEW RESEARCH ANALYST






The South Central Coast Center of Excellence is pleased to introduce the newest member of our team, Shawn Kern.

[READ NEWS](#)

### CONTACT



**Adele Hermann, Ph.D.**  
Regional Director  
📞 (805) 553-4625  
✉ [ahermann@vcccd.edu](mailto:ahermann@vcccd.edu)

Type	Title	Date	Category	Region
 <b>Aerospace Welding</b> Program Recommendations		November 2, 2022	Manufacturing, Transportation & Logistics	South Central Coast
 <b>Technical Theater</b> Program Recommendations		November 2, 2022	Arts, Media & Design	South Central Coast
 <b>Digital Marketing</b> Program Recommendations		November 2, 2022	Information & Communication Technologies, Business Operations & Services	South Central Coast
 <b>Medical Assisting</b> Program Recommendations		November 2, 2022	Healthcare	South Central Coast
 <b>Logistics</b> Program Recommendations		November 2, 2022	Transportation & Logistics	South Central Coast
 <b>Journalism</b> Program Recommendations		November 2, 2022	Arts, Media & Design	South Central Coast
 <b>Workforce Needs in the Construction Sector</b> Presentation		October 31, 2022	Building & Construction	Bay Area, Central California, Far North, South Central Coast
 <b>Radio and Television</b> Program Recommendations		October 24, 2022	Information & Communication Technologies, Arts, Media & Design	South Central Coast



## The leading source of labor market research for the California Community Colleges

Our work empowers community colleges to make informed decisions for preparing the workforce of tomorrow



## KEYWORD

## REGIONS

- ☐ Inland Empire/Desert
- ☐ Los Angeles
- ☐ Orange County
- ☐ San Diego/Imperial
- ☐ South Central Coast
- ☐ All Regions
- ☐ California



Infographic



Presentation



Program  
Recommendations



Newsletter

## CATEGORIES

### REGIONAL TOGGLES ⓘ

Select All Regions ☐

Search Reports from all regions

Select Statewide ☐

Only search reports that cover the entire state

### TOTAL RESULTS

0 of 1058

SEARCH

RESET SEARCH







# **Centers of Excellence for Labor Market Research**

---

**COE Tools**



## RESOURCES

Tools for labor market research and decision-making

Data analysis tools and training created by COE

### TOOLS FOR YOU



#### SUPPLY AND DEMAND TABLES

The COE have developed a suite of data tools to support community college decision-making with labor market data. Utilize these data tools to evaluate projected occupational demand and the supply of graduates from a program(s) of study.

[Download Below](#)



#### TOP-SOC CROSSWALK

Match California Community Colleges TOP code programs to Standard Occupational Classification (SOC) codes and titles.

[Coming Soon](#)



#### LMI GUIDES

A brief overview of labor market information sources, tailored to the questions that colleges commonly ask related to developing programs, curriculum, writing grants, program review, and regional planning.

[Coming Soon](#)

	A	B	C	D	E	F	G	H	I	J
1	CTE	top4	top6	TOP6_Title	cip2010	CIP2010_Title	soc2010	SOC2010_Title	Education	SOC Change? Yes/no
2	yes	0101-	010100	Agriculture Technology and Sciences, Ge	010000	Agriculture, General.	194011	Agricultural and Food Science Technicians	Requires an Associate Degree	Yes
3	yes	0101-	010100	Agriculture Technology and Sciences, Ge	010000	Agriculture, General.	191012	Food Scientists and Technologists	Requires a Bachelor's or Higher	Yes
4	yes	0102-	010200	Animal Science	010302	Animal/Livestock Husbandry and	452021	Animal Breeders	On-The-Job Training, No College Required	Yes
5	yes	0102-	010200	Animal Science	010302	Animal/Livestock Husbandry and	119013	Farmers, Ranchers, and Other Agricultural Manage	On-The-Job Training, No College Required	Yes
6	yes	0102-	010200	Animal Science	010302	Animal/Livestock Husbandry and	451011	First-Line Supervisors of Farming, Fishing, and Fore	On-The-Job Training, No College Required	Yes
7	yes	0102-	010210	Veterinary Technician (Licensed)	510808	Veterinary/Animal Health Techn	292056	Veterinary Technologists and Technicians	Requires an Associate Degree	No
8	yes	0102-	010220	Artificial Inseminator (Licensed)	510808	Veterinary/Animal Health Techn	452021	Animal Breeders	On-The-Job Training, No College Required	No
9	yes	0102-	010230	Dairy Science	010306	Dairy Husbandry and Production.	452021	Animal Breeders	On-The-Job Training, No College Required	Yes
10	yes	0102-	010230	Dairy Science	010306	Dairy Husbandry and Production.	119013	Farmers, Ranchers, and Other Agricultural Manage	On-The-Job Training, No College Required	Yes
11	yes	0102-	010230	Dairy Science	010306	Dairy Husbandry and Production.	451011	First-Line Supervisors of Farming, Fishing, and Fore	On-The-Job Training, No College Required	Yes
12	yes	0102-	010240	Equine Science	010307	Horse Husbandry/Equine Science	452021	Animal Breeders		
13	yes	0102-	010240	Equine Science	010307	Horse Husbandry/Equine Science	392011	Animal Trainers		
14	yes	0102-	010240	Plant Science	010304	Crop Production.	373012	Pesticide Handlers, Sprayers, and Applicators, \		
15	yes	0103-	010300	Plant Science	010304	Crop Production.	119013	Farmers, Ranchers, and Other Agricultural Mar		
16	yes	0103-	010300	Plant Science	010304	Crop Production.	451011	First-Line Supervisors of Farming, Fishing, and		
17	yes	0103-	010310	Agricultural Pest Control Adviser and Op	010399	Agricultural Production Operation	451011	First-Line Supervisors of Farming, Fishing, and		
18	yes	0103-	010310	Agricultural Pest Control Adviser and Op	010399	Agricultural Production Operation	373012	Pesticide Handlers, Sprayers, and Applicators, \		
19	yes	0104-	010400	Viticulture, Enology, and Wine Business	010309	Viticulture and Enology.	194011	Agricultural and Food Science Technicians		
20	yes	0104-	010400	Viticulture, Enology, and Wine Business	010309	Viticulture and Enology.	119013	Farmers, Ranchers, and Other Agricultural Mar		
21	yes	0104-	010400	Viticulture, Enology, and Wine Business	010309	Viticulture and Enology.	451011	First-Line Supervisors of Farming, Fishing, and		
22	yes	0104-	010400	Viticulture, Enology, and Wine Business	010309	Viticulture and Enology.	191012	Food Scientists and Technologists		
23	yes	0109-	010900	Horticulture	010601	Applied Horticulture/Horticulture	119013	Farmers, Ranchers, and Other Agricultural Mar		
24	yes	0109-	010900	Horticulture	010601	Applied Horticulture/Horticulture	371012	First-Line Supervisors of Landscaping, Lawn Se		



## TOP-SOC CROSSWALK

Match California Community Colleges TOP  
code programs to Standard Occupational  
Classification (SOC) codes and titles.

Coming Soon

California Community Colleges

# Taxonomy of Programs

*February 2004*  
*6th Edition*

Revised: June 2012, September 2009, July and March 2007  
Corrected: July 2013, November 2004



## **TOP 01 – Agriculture and Natural Resources**

Instructional programs that prepare individuals to apply scientific knowledge and methods, and technical skills, to support agribusiness and agricultural activities, such as management, production and propagation, supplies and services, mechanics, marketing, and horticulture.

### **\* 0101.00 – Agriculture Technology and Sciences, General**

Economic and business principles used in the organization, operation, and management of farm and agricultural businesses.

### **\* 0102.00 – Animal Science**

Operation of animal production enterprises by developing competencies in the selection, breeding, physiology, nutrition, health, housing, feeding, and marketing of animals.

#### **\* 0102.10 – Veterinary Technician (Licensed)**

Laws and regulations, principles and practices, and licensure requirements that prepare individuals to assist the veterinarian, biological researcher or other scientist in applying knowledge of veterinary medical assisting procedures and techniques.

#### **\* 0102.20 – Artificial Inseminator (Licensed)**

Laws and regulations, principles and practices, and licensure requirements of artificial inseminators.

#### **\* 0102.30 – Dairy Science**

Care of dairy animals and associated dairy farm and processing facilities and operations.

#### **\* 0102.40 – Equine Science**

Programs related to horse breeding, management, training, and riding.

### **\* 0103.00 – Plant Science**


Theories, principles, and practices involved in the production and management of plants for food, feed, fiber, and soil conservation.



# **Centers of Excellence for Labor Market Research**

---

**Launchboard**



**Community College Pipeline**  
Community college offerings, student characteristics, milestones, completion, and employment outcomes to support program review and planning.


[Explore](#)



**CALIFORNIA  
ADULT EDUCATION**


**Adult Education Pipeline**  
Comprehensive, multi-level data on student demographics, enrollment, outcomes, types of services received, and employment using new adult education data and accountability metrics.

[Explore](#)



**Strong Workforce Program**  
Completion and employment data for examining long-term outcomes.

[Explore](#)



**K12 Strong Workforce Program**  
Examine CTE system engagement and high school graduation for K12 students at institutions awarded K12 SWP funding.

[Explore](#)



California  
Community  
Colleges

LaunchBoard

The LaunchBoard, a statewide data system supported by the California Community Colleges Chancellor's Office and hosted by Cal-PASS Plus, provides data on progress, success, employment, and earnings outcomes for California community college students.

[Find out more about the LaunchBoard dashboards here.](#)

If you have any questions or feedback, please email [launchboard@cccco.edu](mailto:launchboard@cccco.edu).





# Questions?

---

Dr. Adele Hermann   Director, South Central Coast COE  
[ahermann@vcccd.edu](mailto:ahermann@vcccd.edu)

Shawn Kern   Research Analyst, South Central Coast COE  
[skern1@vcccd.edu](mailto:skern1@vcccd.edu)

## Thank you!



Browse our work online @ [coeccc.net](http://coeccc.net)