



K12 STRONG WORKFORCE PROGRAM +

South Central Coast Regional Consortium

April 18, 2023



Where we have
been



K12 SWP Funding: Rounds 1 - 5



TOTAL FUNDING:
\$51,265,983



**NUMBER OF
PROJECTS: 41**



NUMBER OF LEAS:
14

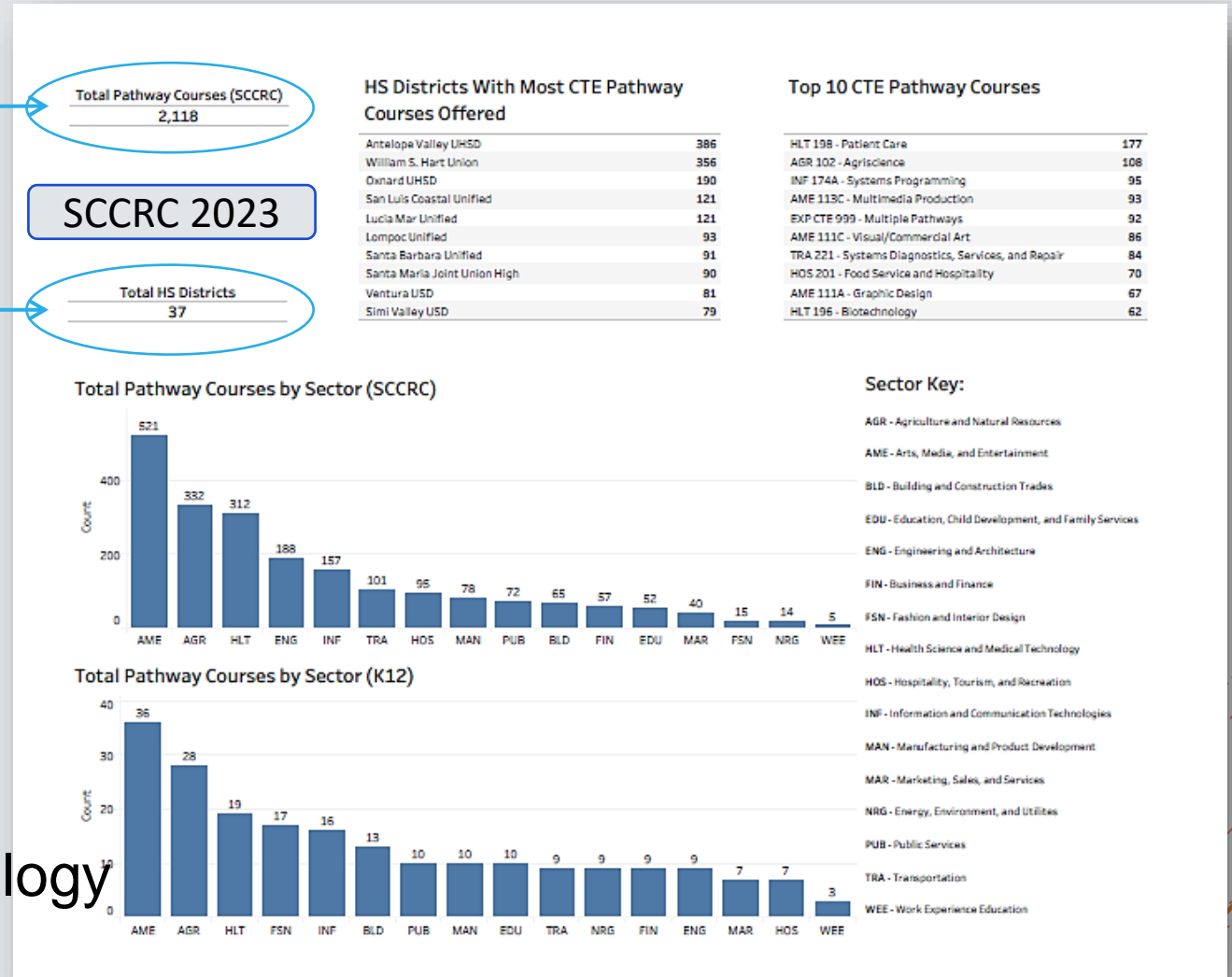
SCCRC's K12 CTE Courses

✓ 2,118 CTE COURSES

✓ 37 HIGH SCHOOL DISTRICTS

TOP COURSES BY SECTOR

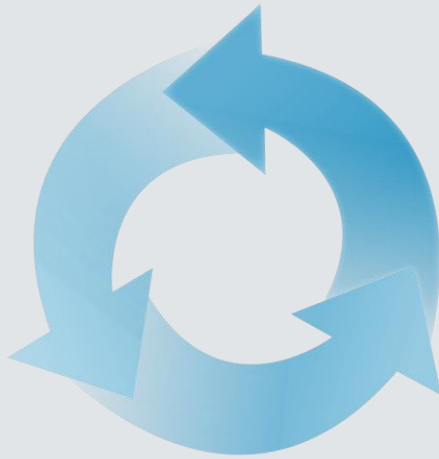
1. Arts Media & Entertainment
2. Agriculture & Natural Resources
3. Health Science & Medical Technology



What we've learned as Grantees

SUCCESSSES

- + New CTE Pathways
- + Industry Equipment
- + PD for CTE Staff
- + New Lead LEAs
- + Post-Secondary Field Trips
- + Reflective Practitioners



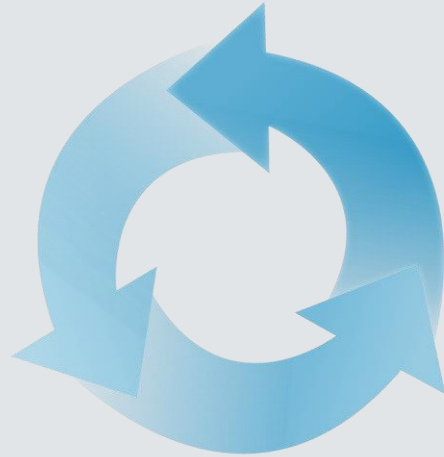
CHALLENGES

- + COVID
- + CTE Credentialed Teachers
- + Work-Based Learning Opportunities
- + College Partnership: Dual Enrollment
- + Managing Multiple LEAs

What we've learned as a region

SUCCESSSES

- + Veteran Review Team & Selection Committee
- + K14 TAPs + K12 PCs
- + Reflective Practitioners
- + Flexibility by SCCRC Team



CHALLENGES

- + COVID
- + Key Talent Turnover
- + Repeal of K12 SWP
- + Multiple RFAs

K12 SWP Rounds 1-5: Where we have been: What are your thoughts, comments?

Powered by  **Poll Everywhere**

Start the presentation to see live content. For screen share software, share the entire screen. Get help at pollev.com/app

Where we are
heading



On the horizon



- +K14 CTE Course Mapping
- +Perkins Funding
- +CTE Counseling Focus Group
- +Wellness Wednesdays
- +K12 SWP for Educators
- +K12 SWP Round 6 Office Hours
- +Project Based Learning PD



May – December 2023

CTE COUNSELING FOCUS GROUP: A COMMUNITY OF PRACTICE

Looking to further integrate CTE within your Counseling scope? Want to learn, develop, and create with K14 colleagues throughout the SCCRC region?

The South Central Coast Regional Consortium (SCCRC) is hosting bimonthly Focus Group sessions for K14 Counselors from May - December 2023. Be a part of a regional support team of K14 CTE educators improving the multiple transitions points of students!

Join Dr. Dawson and fellow K14 Counselors for bi-monthly virtual meetings to:

1. Develop, refine student transitions from middle school to high school and college, and
2. Establish communication protocols of CTE educators with local community college professionals.



DR. YOLANDA DAWSON
K14 Counselor, Lecturer, &
Organizational Leadership Coach

REGISTER BELOW FOR THE
CALENDAR INVITATION:

 [CLICK HERE](#)

www.sccrcolleges.org

**1ST & 3RD WEDNESDAY
MAY 3RD-DECEMBER 20TH
4PM - 5 PM
VIA ZOOM**



CTE Counseling Focus Group

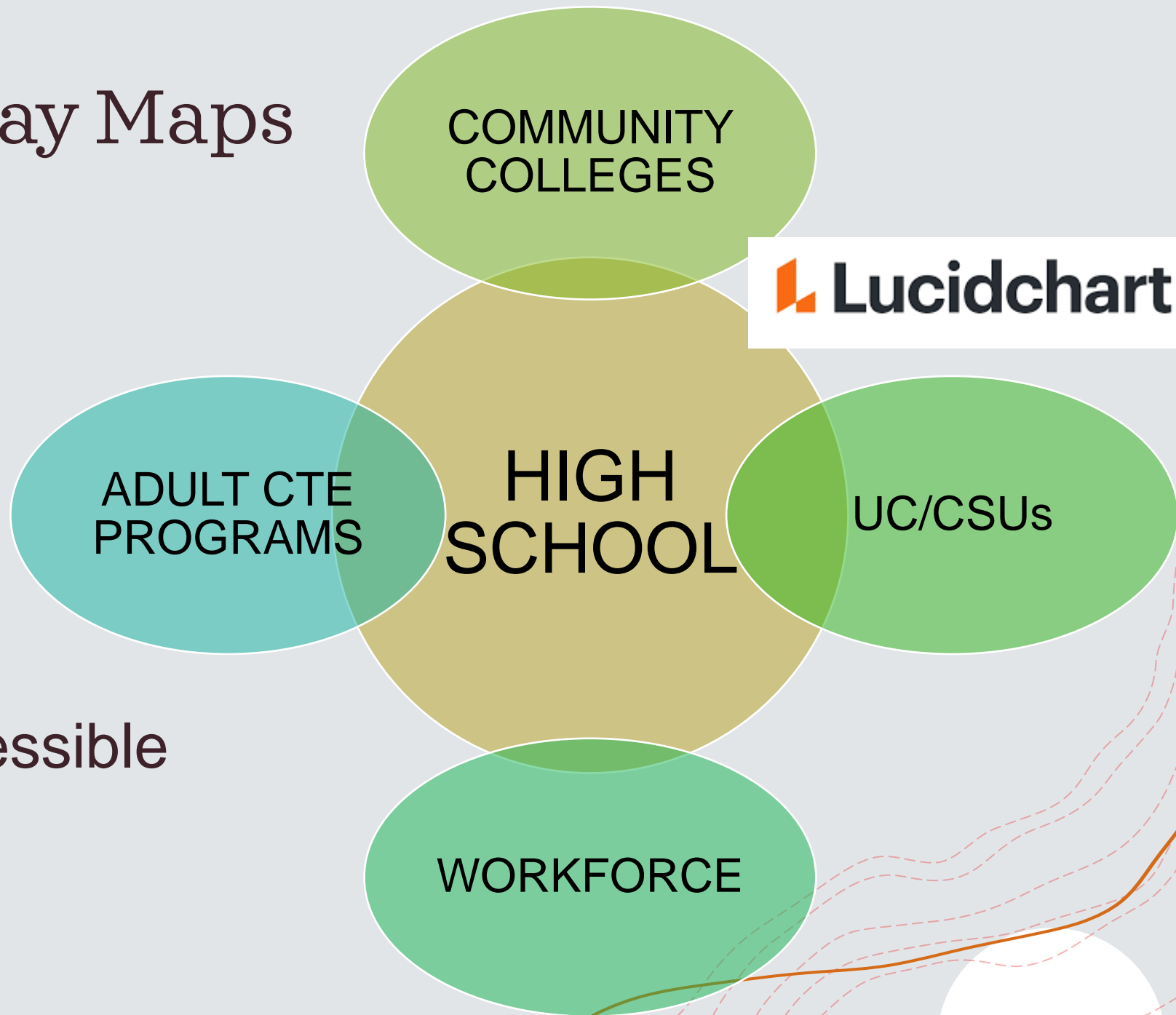
1st & 3rd Wednesday

May 3, 2023 – December 2023

4PM – 5PM via zoom

K14 CTE Pathway Maps

- + Current Information
- + English & Spanish
- + Dynamic Interface
- + Middle School Accessible



CTE Mapping Focus Group



- +K12 Pathway Coordinators
- +K14 CTE Counselors, Admin, Students, Parents
- +Subregional Informational Sessions
- +Summer 2023

K12 SWP Round 6 RFA

- +No change in release date – August 2023
- +Selection Committee convenes June – July for Funding Parameters
- +Anticipate Grant Writing Workshop Series
- +K14 TAP RFA Support
 - +Weekly/bimonthly “thought partner” sessions
 - +Summer Virtual Office Hours
 - +RFA Planner At-A-Glance + Checklist

Looking Ahead: Share a few words of what you want in CTE for the 2023-2024 school year

Powered by  **Poll Everywhere**

Start the presentation to see live content. For screen share software, share the entire screen. Get help at pollev.com/app

K12 SWP Survey

- + SCCRC will send a K12 SWP survey
- + Assess needs of CTE Educators
- + Workshops, Trainings, Lectures, Support
- + Potential PM CTE zoom for Educators



If we were good at everything,
we'd have no need for each other.

- SIMON SINEK

The background is a vibrant, abstract composition. The upper half is a solid magenta color, while the lower half is a light gray. A horizontal band of overlapping, semi-transparent geometric shapes in various colors (green, blue, purple, yellow, and gray) runs across the middle. These shapes include triangles, squares, and circles, some with internal patterns like dots or concentric circles. White dashed lines, resembling topographic map contour lines, flow across the entire image, curving and looping around the geometric elements. A small, solid blue plus sign is located on the left side, near the center of the image.

Thank you